



### SKODA Octavia: 2BJQ499

Vinnnumber:	<b>TMBAW7NX6NY048905</b>	Versionname:	<b>Octavia 1.4 TSI PHEV DSG6 Clever+ (PHEV)</b>
First Registrationdate:	<b>9/12/2021</b>	Fiscalpower:	<b>150kW/204pk 5D/P Auto-6</b>
Expertise Mileage:	<b>41022</b>	Power Kw:	
Bodytype:		Body colour:	<b>Black</b>
Gearbox:	<b>Automatic</b>	Type of rims (mounted):	<b>Aluminium</b>
Transmission:	<b>Front</b>	Parking lot:	<b>c504</b>
Fueltype:	<b>Hybrid Petrol</b>		
Number of doors:	<b>5</b>		
Number of seats:	<b>5</b>		
Number head rests:	<b>5</b>		
Type of rims (mounted):	<b>Aluminium</b>		
Certificate of Conformity:	<b>Yes</b>		
Category:	<b>Passenger Car</b>		
Registration Certificate Car (BE):	<b>Yes</b>		
Bodywork:	<b>Clean</b>		
Interior:	<b>Clean</b>		

### Options

Number of keys total:	<b>3</b>	Radio:	
Number keys remote:	<b>3</b>	Front parking sensors:	
GPS storage:	<b>HD</b>	Rear parking sensors:	
Windows electric F:		Fog lights (front):	
Windows electric R:			
Cruise Control:			
Steering wheel multifunctional:			
Seats F heated:			
Alarm:			
Navigation with screen:			
Airco electronic:			
Rims alloy:			

### Limited Technical Inspection

Idle position:	<b>OK</b>	Sound engine:	<b>OK</b>
Engine startingtime:	<b>OK</b>	Clutch test:	<b>OK</b>
Exhaust gass:	<b>OK</b>	Transmission:	<b>OK</b>

### Tyres

205/55/17/95 V				
Winter tyres:	Fr.L.	<b>Dunlop: 4 mm</b>	Fr.R.	<b>Dunlop: 4 mm</b>
	Re.L.	<b>Dunlop: 4 mm</b>	Re.R.	<b>Dunlop: 4 mm</b>
Tyre profile depth FL				<b>4.0</b>
Tyre profile depth FR				<b>4.0</b>
Tyre profile depth RL				<b>4.0</b>
Tyre profile depth RR				<b>4.0</b>
Tyre size FL				<b>205/55 R 17 95 V</b>
Tyre size FR				<b>205/55 R 17 95 V</b>
Tyre size RL				<b>205/55 R 17 95 V</b>
Tyre size RR				<b>205/55 R 17 95 V</b>
Tyre type FL				<b>Winter</b>
Tyre type FR				<b>Winter</b>
Tyre type RL				<b>Winter</b>
Tyre type RR				<b>Winter</b>
Tyre make FL				<b>257</b>
Tyre make FR				<b>257</b>
Tyre make RL				<b>257</b>
Tyre make RR				<b>257</b>

### Assistance equipment

Repair kit:	<b>Yes</b>	Compressor:	<b>Yes</b>
-------------	------------	-------------	------------

Number of charging cables (normal)  
Number of charging cables (rapid charge)

2  
1

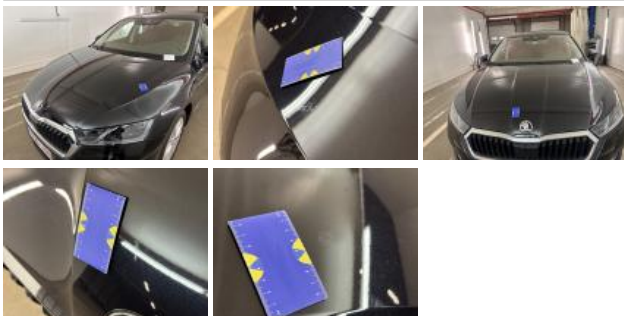
Instrument panel, complete, Repaired, Acceptable



Door panel RL, Scratch(es), Smart repair



Bonnet, Chemical polution, Polish



Wing RL, Chemical polution, Polish



Alloy rim RL, Scratch(es), Polish



Door FL, Scratch(es), Acceptable



Rear light R, Scratch(es), Polish



Bumper R, Scratch(es), Polish

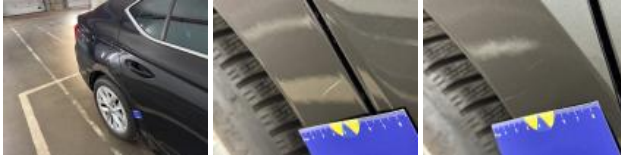




Door RR, Scratch(es), Acceptable



Wing RR, Chemical polution, Polish



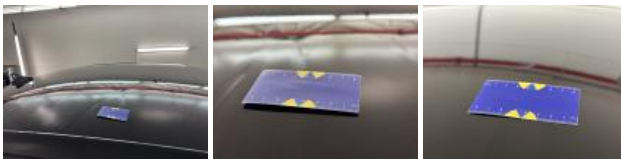
Alloy rim RR, Scratch(es), Repair and paint (complete)



Roof pillar R, Chemical polution, Polish



Roof, Chemical polution, Polish



Bodywork, No damage, Acceptable

