



OPEL Corsa: 2DDH909			
Vinnnumber:	VXKUPHNSSN4425990	Versionname:	Corsa 1.2 Turbo S/S Auto GS Line 96kW/131pk
First Registrationdate:	13/02/2023	Fiscalpower:	5D/P Auto-8
Expertise Mileage:	10061	Power Kw:	
Bodytype:		Body colour	Black
Gearbox:	Automatic	Type of rims (mounted)	Aluminium
Transmission:	Front	Parking lot	pp58
Fueltype:	Petrol		
Number of doors	5		
Number of seats	5		
Number head rests	5		
Type of rims (mounted)	Aluminium		
Certificate of Conformity	Yes		
Category	Passenger Car		
Registration Certificate Car (BE)	Yes		
Bodywork	Clean		
Interior	Clean		

Options			
Number of keys total	2	Radio	
Number keys remote	2	Front parking sensors	
Windows electric F		Rear parking sensors	
Windows electric R			
Cruise Control			
Steering wheel multifunctional			
Seats F heated			
Airco manual			
Rims alloy			

Limited Technical Inspection			
Idle position	OK	Sound engine	OK
Engine startingtime	OK	Clutch test	OK
Exhaust gass	OK	Transmission	OK

Tyres				
Summer tyres:	195/55/16/91 V			
	Fr.L.	Nokian: 7 mm	Fr.R.	Other: 7 mm
	Re.L.	Goodyear: 7 mm	Re.R.	Goodyear: 7 mm
Tyre profile depth FL				7.0
Tyre profile depth FR				7.0
Tyre profile depth RL				7.0
Tyre profile depth RR				7.0
Tyre size FL				195/55 R 16 91 V
Tyre size FR				195/55 R 16 91 V
Tyre size RL				195/55 R 16 91 H
Tyre size RR				195/55 R 16 91 H
Tyre type FL				All seasons
Tyre type FR				All Seasons
Tyre type RL				All seasons
Tyre type RR				All Seasons
Tyre make FL				548472
Tyre make FR				263
Tyre make RL				259
Tyre make RR				259

Assistance equipment			
Repair kit	Yes	Compressor	Yes
Number of charging cables (normal)	0		
Number of charging cables (rapid charge)	0		

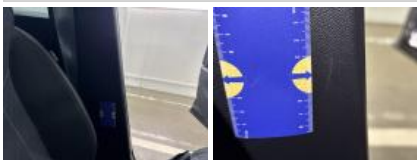
Seat cover RL, Stain, Cleaning



Seat cover FR, Stain, Cleaning



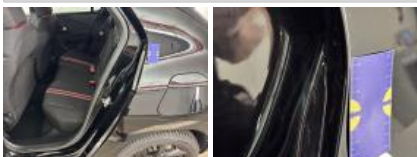
Door panel FL, Scratch(es), Acceptable



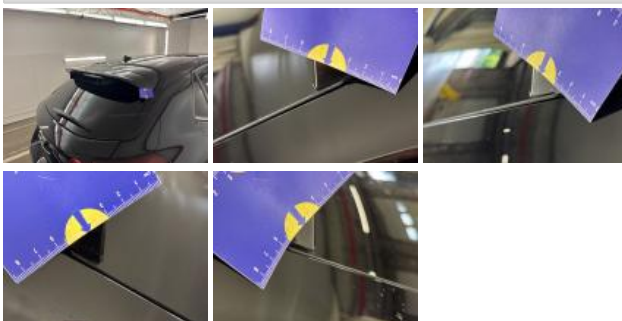
Bumper F, Bad repair, Spot repair



Central pillar L, Bad repair, Spot repair



Rear spoiler, Bad repair, Spot repair



Step R, Dent(s), Acceptable



Central pillar R, Bad repair, Spot repair

