



MERCEDES A-Klasse: 2ABR409

Vinnnumber:	W1K1770101V094764	Versionname:	A-Klasse A 180 d DCT Business Solution
First Registrationdate:	11/02/2021	Fiscalpower:	85kW/116pk 5D/P Auto-8
Expertise Mileage:	37646	Power Kw:	
Bodytype:		Body colour	Dark Grey
Gearbox:	Automatic	Type of rims (mounted)	N/A
Transmission:	Front	Parking lot	b113
Fueltype:	Diesel		
Number of doors	5		
Number of seats	5		
Number head rests	5		
Type of rims (mounted)	N/A		
Certificate of Conformity	Yes		
Category	Passenger Car		
Registration Certificate Car (BE)	Yes		
Bodywork	Clean		
Interior	Clean		

Options

Number of keys total	2	Radio
Number keys remote	2	Sun Roof electric
Windows electric F		Front parking sensors
Windows electric R		Rear parking sensors
Cruise Control		
Steering wheel multifunctional		
Seats F heated		
Alarm		
Navigation with screen		
Airco electronic		

Limited Technical Inspection

Idle position	OK	Sound engine	OK
Engine startingtime	OK	Clutch test	OK
Exhaust gass	OK	Transmission	OK

Degree of wear

205/60/16/92 H				
Summer tyres:	Fr.L.	Goodyear: 4 mm	Fr.R.	Goodyear: 4 mm
	Re.L.	Goodyear: 5 mm	Re.R.	Goodyear: 5 mm
Tyre profile depth FL				4.0
Tyre profile depth FR				4.0
Tyre profile depth RL				5.0
Tyre profile depth RR				5.0
Tyre size FL				205/60 R 16 92 H
Tyre size FR				205/60 R 16 92 H
Tyre size RL				205/60 R 16 92 H
Tyre size RR				205/60 R 16 92 H
Tyre type FL				All seasons
Tyre type FR				All Seasons
Tyre type RL				All seasons
Tyre type RR				All Seasons
Tyre make FL				259
Tyre make FR				259
Tyre make RL				259
Tyre make RR				259

Assistance equipment

Repair kit	Yes	Compressor	Yes
Number of charging cables (normal)	0		

Armrest, Scratch(es), Smart repair



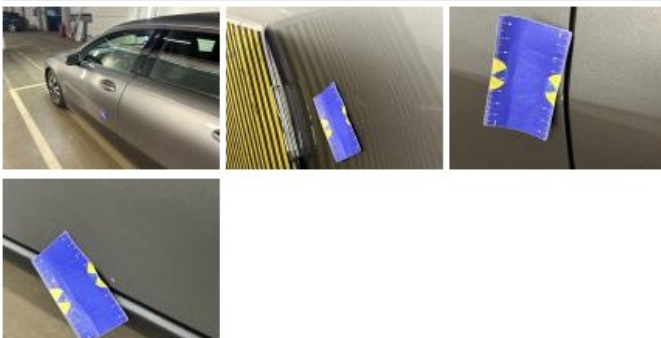
Dashboard, Scratch(es), Smart repair



Bumper F, Scratch(es), Repair and paint (complete)



Door FL, Dent(s), Paintless dent repair



Alloy rim FL polished, Scratch(es), Repair and paint (complete)



Bumper R, Dent(s) and scratch(es), Repair and paint (complete)





Alloy rim FR polished, Scratch(es), Repair and paint (complete)



Outside rear-view mirror base R, Scratch(es), Acceptable

