



**VOLVO XC40: 2AUV611**

Vinnumber:	<b>YV1XZEDVEN2660372</b>	Versionname:	<b>XC40 P8 4x4 Recharge R-Design 300kW/408pk 5D/P Auto-1</b>
First Registrationdate:	<b>28/07/2021</b>	Fiscalpower:	
Expertise Mileage:	<b>86230</b>	Power Kw:	<b>300</b>
Bodytype:		Body colour:	<b>Black</b>
Gearbox:	<b>Automatic</b>	Type of rims (mounted):	<b>Aluminium</b>
Transmission:	<b>4 Wheel-drive</b>	Parking lot:	<b>a311</b>
Fueltype:	<b>Electric</b>		
Number of doors:	<b>5</b>		
Number of seats:	<b>5</b>		
Number head rests:	<b>5</b>		
Type of rims (mounted):	<b>Aluminium</b>		
Certificate of Conformity:	<b>Yes</b>		
Category:	<b>Passenger Car</b>		
Registration Certificate Car (BE):	<b>Yes</b>		
Bodywork:	<b>Clean</b>		
Interior:	<b>Clean</b>		

**Options**

Number of keys total:	<b>2</b>	Radio	
Number keys remote:	<b>2</b>	Lining leather	
Windows electric F:		Sun Roof electric	
Windows electric R:		Front parking sensors	
Cruise Control:		Rear parking sensors	
Steering wheel multifunctional:		Fog lights (front)	
Seats F heated:			
Navigation with screen:			
Airco electronic:			
Rims alloy:			

**Limited Technical Inspection**

Idle position:	<b>OK</b>	Sound engine:	<b>OK</b>
Engine startingtime:	<b>OK</b>	Clutch test:	<b>OK</b>
Exhaust gass:	<b>OK</b>	Transmission:	<b>OK</b>

**Tyres**

Summer tyres:	255/45/19/104 H			
	Fr.L.	Pirelli: 3 mm	Fr.R.	Pirelli: 3 mm
	Re.L.	Pirelli: 3 mm	Re.R.	Pirelli: 3 mm
Tyre profile depth FL	3.0			
Tyre profile depth FR	3.0			
Tyre profile depth RL	3.0			
Tyre profile depth RR	3.0			
Tyre size FL	255/45 R 19 104 H			
Tyre size FR	255/45 R 19 104 H			
Tyre size RL	255/45 R 19 104 H			
Tyre size RR	255/45 R 19 104 H			
Tyre type FL	All seasons			
Tyre type FR	All Seasons			
Tyre type RL	All seasons			
Tyre type RR	All Seasons			
Tyre make FL	264			
Tyre make FR	264			
Tyre make RL	264			
Tyre make RR	264			

**Assistance equipment**

Number of charging cables (normal):	<b>1</b>	Compressor:	<b>No</b>
Number of charging cables (rapid charge):	<b>1</b>		

Windscreen, Repaired, Acceptable



Alloy rim FL polished, Scratch(es), Repair and paint (complete)



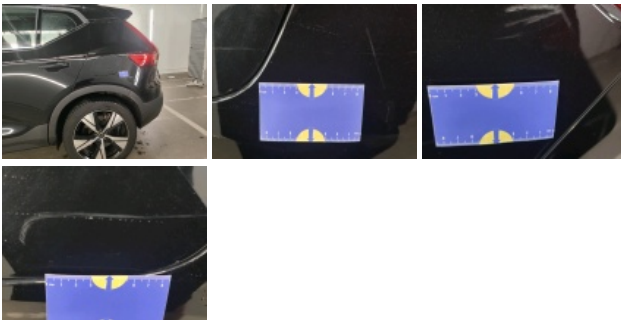
Door FL, Scratch(es), Acceptable



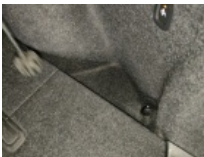
Alloy rim RL polished, Scratch(es), Acceptable



Wing RL, Scratch(es), Polish



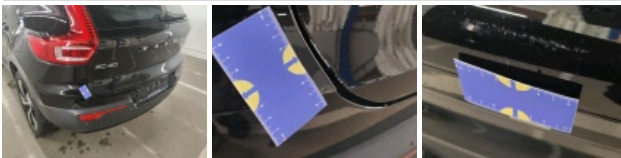
Compressor, Missing, Replace



Bumper R, Scratch(es), Acceptable



Tailgate / Boot, Scratch(es), Acceptable



Bumper trim R, Scratch(es), Acceptable



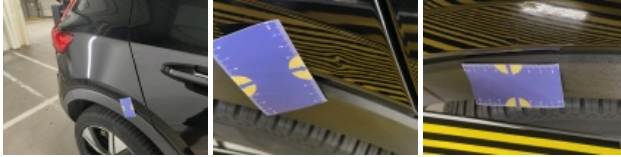
Alloy rim FR polished, Scratch(es), Repair and paint (complete)



Door FR, Dent(s), Acceptable



Wing RR, Dent(s), Acceptable



Alloy rim RR polished, Scratch(es), Repair and paint (complete)

