


PEUGEOT 2008: 2BXF385

Vinnumber:	VR3JUDYHZSNJ594025	Versionname:	2008 1.5 BlueHDI S/S EAT8 Roadtrip 96kW/130pk 5D/P Auto-8
First Registrationdate:	27/04/2022	Fiscalpower:	
Expertise Mileage:	78145	Power Kw:	
Bodytype:		Body colour:	White
Gearbox:	Automatic	Type of rims (mounted):	Aluminium
Transmission:	Front	Parking lot:	b215
Fueltype:	Diesel		
Number of doors:	5		
Number of seats:	5		
Number head rests:	5		
Type of rims (mounted):	Aluminium		
Certificate of Conformity:	Yes		
Category:	Passenger Car		
Registration Certificate Car (BE):	Yes		
Bodywork:	Clean		
Interior:	Clean		

Options

Number of keys total	2	Radio
Number keys remote	2	Rear parking sensors
Windows electric F		Fog lights (front)
Windows electric R		
Cruise Control		
Steering wheel multifunctional		
Seats F heated		
Navigation with screen		
Airco electronic		
Rims alloy		

Limited Technical Inspection

Idle position	OK	Sound engine	OK
Engine startingtime	OK	Clutch test	OK
Exhaust gass	OK	Transmission	OK

Tyres

	215/60/17/96 H			
Winter tyres:	Fr.L.	Fulda: 6 mm	Fr.R.	Fulda: 6 mm
	Re.L.	Fulda: 6 mm	Re.R.	Fulda: 6 mm
Tyre profile depth FL				6.0
Tyre profile depth FR				6.0
Tyre profile depth RL				6.0
Tyre profile depth RR				6.0
Tyre size FL				215/60 R 17 96 H
Tyre size FR				215/60 R 17 96 H
Tyre size RL				215/60 R 17 96 H
Tyre size RR				215/60 R 17 96 H
Tyre type FL				Winter
Tyre type FR				Winter
Tyre type RL				Winter
Tyre type RR				Winter
Tyre make FL				2484
Tyre make FR				2484
Tyre make RL				2484
Tyre make RR				2484

Assistance equipment

Repair kit	Yes	Compressor	Yes
Number of charging cables (normal)	0		
Number of charging cables (rapid charge)	0		

Instrument panel, complete, Not functioning (well), Check



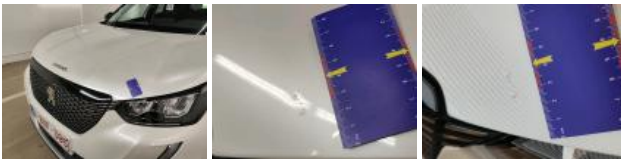
Instrument panel, complete, Repaired, Acceptable



Engine insulation, Hole, Replace



Bonnet, Stone chip(s), Repair and paint (complete)



Door RL, Dent(s), Acceptable



Bodywork, No damage, Acceptable



Roof, Dent(s), Acceptable

