


**PEUGEOT 508 SW: 2BLG846**

Vinnnummer:	<b>VR3F4DGZTMY540516</b>	Versionname:	<b>508 SW 1.6 Hybrid 225 e-EAT8 GT Pack (PHEV)</b>
First Registrationdate:	<b>3/01/2022</b>	Fiscalpower:	<b>165kW/225pk 5D/P Auto-8</b>
Expertise Mileage:	<b>70852</b>	Power Kw:	
Bodytype:		Body colour:	<b>White</b>
Gearbox:	<b>Automatic</b>	Type of rims (mounted):	<b>Aluminium</b>
Transmission:	<b>Front</b>	Parking lot:	<b>d332</b>
Fueltype:	<b>Hybrid Petrol</b>		
Number of doors:	<b>5</b>		
Number of seats:	<b>5</b>		
Number head rests:	<b>5</b>		
Type of rims (mounted):	<b>Aluminium</b>		
Certificate of Conformity:	<b>Yes</b>		
Category:	<b>Passenger Car</b>		
Registration Certificate Car (BE):	<b>Yes</b>		
Bodywork:	<b>Clean</b>		
Interior:	<b>Clean</b>		

**Options**

Number of keys total	<b>2</b>	Radio
Number keys remote	<b>2</b>	Lining leather
Windows electric F		Sun Roof electric
Windows electric R		Front parking sensors
Cruise Control		Rear parking sensors
Steering wheel multifunctional		
Seats F heated		
Navigation with screen		
Airco electronic		
Rims alloy		

**Limited Technical Inspection**

Idle position	<b>OK</b>	Sound engine	<b>OK</b>
Engine startingtime	<b>OK</b>	Clutch test	<b>OK</b>
Exhaust gass	<b>OK</b>	Transmission	<b>OK</b>

**Tyres**

<b>235/45/18/98 V</b>				
Winter tyres:	Fr.L.	<b>Dunlop: 3 mm</b>	Fr.R.	<b>Dunlop: 3 mm</b>
	Re.L.	<b>Dunlop: 4 mm</b>	Re.R.	<b>Dunlop: 4 mm</b>
Tyre profile depth FL				<b>3.0</b>
Tyre profile depth FR				<b>3.0</b>
Tyre profile depth RL				<b>4.0</b>
Tyre profile depth RR				<b>4.0</b>
Tyre size FL				<b>235/45 R 18 98 V</b>
Tyre size FR				<b>235/45 R 18 98 V</b>
Tyre size RL				<b>235/45 R 18 98 V</b>
Tyre size RR				<b>235/45 R 18 98 V</b>
Tyre type FL				<b>Winter</b>
Tyre type FR				<b>Winter</b>
Tyre type RL				<b>Winter</b>
Tyre type RR				<b>Winter</b>
Tyre make FL				<b>257</b>
Tyre make FR				<b>257</b>
Tyre make RL				<b>257</b>
Tyre make RR				<b>257</b>

**Assistance equipment**

Repair kit	<b>Yes</b>	Compressor	<b>Yes</b>
Number of charging cables (normal)	<b>1</b>		
Number of charging cables (rapid charge)	<b>1</b>		

Instrument panel, complete, Repaired, Acceptable



Bumper F, Scratch(es), Acceptable



Alloy rim FL polished, Scratch(es), Repair and paint (complete)



Wing RL, Dent(s), Acceptable



Bumper R, Scratch(es), Acceptable



Rear light R, Scratch(es), Polish



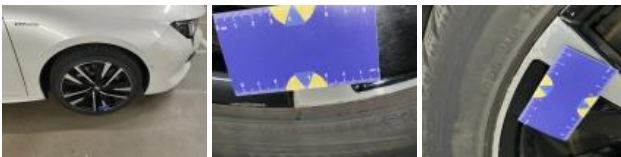
Bumper moulding R, Scratch(es), Acceptable



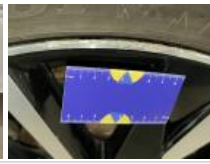
Rear light L, Scratch(es), Polish



Alloy rim FR polished, Scratch(es), Repair and paint (complete)



Alloy rim RR polished, Scratch(es), Repair and paint (complete)



Bodywork, No damage, Acceptable



Roof, Hail damage, Paintless dent repair (hail)

