


**PEUGEOT 508: 2BCL251**

Vinnnummer:	<b>VR3F3DGZTMY527509</b>	Versionname:	<b>508 1.6 Hybrid 225 e-EAT8 GT (PHEV)</b>
First Registrationdate:	<b>24/09/2021</b>	Fiscalpower:	<b>165kW/225pk 5D/P Auto-8</b>
Expertise Mileage:	<b>54901</b>	Power Kw:	
Bodytype:		Body colour:	<b>Dark Grey</b>
Gearbox:	<b>Automatic</b>	Type of rims (mounted):	<b>Aluminium</b>
Transmission:	<b>Front</b>	Parking lot:	<b>b511</b>
Fueltype:	<b>Hybrid Petrol</b>		
Number of doors:	<b>5</b>		
Number of seats:	<b>5</b>		
Number head rests:	<b>5</b>		
Type of rims (mounted):	<b>Aluminium</b>		
Certificate of Conformity:	<b>Yes</b>		
Category:	<b>Passenger Car</b>		
Registration Certificate Car (BE):	<b>Yes</b>		
Bodywork:	<b>Clean</b>		
Interior:	<b>Clean</b>		

**Options**

Number of keys total:	<b>2</b>	Radio:	
Number keys remote:	<b>2</b>	Front parking sensors:	
GPS storage:		Rear parking sensors:	
GPS storage:	<b>HD</b>		
Windows electric F:			
Windows electric R:			
Cruise Control:			
Steering wheel multifunctional:			
Navigation with screen:			
Airco electronic:			
Rims alloy:			

**Limited Technical Inspection**

Idle position:	<b>OK</b>	Sound engine:	<b>OK</b>
Engine startingtime:	<b>OK</b>	Transmission:	<b>OK</b>
Exhaust gass:	<b>OK</b>		

**Tyres**

<b>235/45/18/98 Y</b>				
Summer tyres:	Fr.L.	<b>Vredestein: 5 mm</b>	Fr.R.	<b>Vredestein: 6 mm</b>
	Re.L.	<b>Vredestein: 6 mm</b>	Re.R.	<b>Vredestein: 6 mm</b>
Tyre profile depth FL:				<b>5.0</b>
Tyre profile depth FR:				<b>6.0</b>
Tyre profile depth RL:				<b>6.0</b>
Tyre profile depth RR:				<b>6.0</b>
Tyre size FL:				<b>235/45 R 18 98 Y</b>
Tyre size FR:				<b>235/45 R 18 98 Y</b>
Tyre size RL:				<b>235/45 R 18 98 Y</b>
Tyre size RR:				<b>235/45 R 18 98 Y</b>
Tyre type FL:				<b>All seasons</b>
Tyre type FR:				<b>All Seasons</b>
Tyre type RL:				<b>All seasons</b>
Tyre type RR:				<b>All Seasons</b>
Tyre make FL:				<b>2480</b>
Tyre make FR:				<b>2480</b>
Tyre make RL:				<b>2480</b>
Tyre make RR:				<b>2480</b>

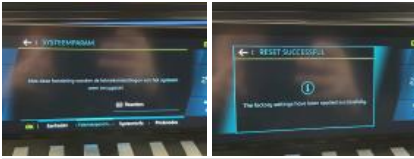
**Assistance equipment**

Repair kit:	<b>Yes</b>	Compressor:	<b>Yes</b>
Number of charging cables (normal):	<b>1</b>		

Seat cover FL, Worn, Acceptable



Instrument panel, complete, Repaired, Acceptable



Bumper F, Scratch(es), Polish



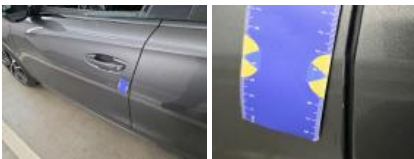
Wing FL, Scratch(es), Acceptable



Outer door handle FL, Scratch(es), Acceptable



Door FL, Scratch(es), Acceptable



Alloy rim RL polished, Scratch(es), Acceptable



Wing RL, Dent(s), Acceptable



Boot lid covering R, Scratch(es), Acceptable



Bumper R, Scratch(es), Polish



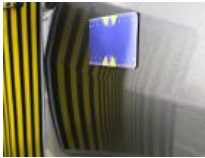
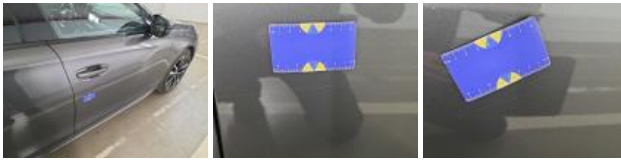
Alloy rim RR polished, Scratch(es), Polish



Wing RR, Scratch(es), Polish



Door FR, Scratch(es), Polish



Door RR, Scratch(es), Polish



Alloy rim FR polished, Scratch(es), Acceptable



Bodywork, No damage, Acceptable



Roof, Hail damage, Paintless dent repair (hail)

