



PEUGEOT 508: 2BMX913

Vinnumber:	VR3FPHNSTMY540920	Versionname:	508 1.2 PureTech 130 S/S EAT8 GT 96kW/130pk 5D/P Auto-8
First Registrationdate:	19/01/2022	Fiscalpower:	
Expertise Mileage:	41693	Power Kw:	96
Bodytype:		Body colour:	Grey
Gearbox:	Automatic	Type of rims (mounted):	Aluminium
Transmission:	Front	Parking lot:	b120
Fueltype:	Petrol		
Number of doors:	5		
Number of seats:	5		
Number head rests:	5		
Type of rims (mounted):	Aluminium		
Certificate of Conformity:	Yes		
Category:	Passenger Car		
Registration Certificate Car (BE):	Yes		
Bodywork:	Clean		
Interior:	Clean		

Options

Number of keys total:	2	Radio
Number keys remote:	2	Front parking sensors
Windows electric F:		Rear parking sensors
Windows electric R:		
Cruise Control:		
Steering wheel multifunctional:		
Navigation with screen:		
Airco electronic:		
Rims alloy:		

Limited Technical Inspection

Idle position:	OK	Sound engine:	OK
Engine startingtime:	OK	Clutch test:	OK
Exhaust gass:	OK	Transmission:	OK

Tyres

235/45/18/98 V				
Winter tyres:	Fr.L.	Goodyear: 5 mm	Fr.R.	Goodyear: 5 mm
	Re.L.	Goodyear: 5 mm	Re.R.	Goodyear: 5 mm
Tyre profile depth FL	5.0			
Tyre profile depth FR	5.0			
Tyre profile depth RL	5.0			
Tyre profile depth RR	5.0			
Tyre size FL	235/45 R 18 98 V			
Tyre size FR	235/45 R 18 98 V			
Tyre size RL	235/45 R 18 98 V			
Tyre size RR	235/45 R 18 98 V			
Tyre type FL	Winter			
Tyre type FR	Winter			
Tyre type RL	Winter			
Tyre type RR	Winter			
Tyre make FL	259			
Tyre make FR	259			
Tyre make RL	259			
Tyre make RR	259			

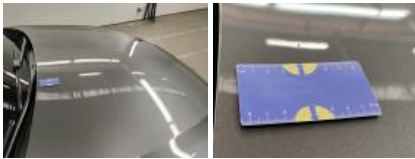
Assistance equipment

Repair kit:	Yes	Compressor:	Yes
Number of charging cables (normal):	0		
Number of charging cables (rapid charge):	0		

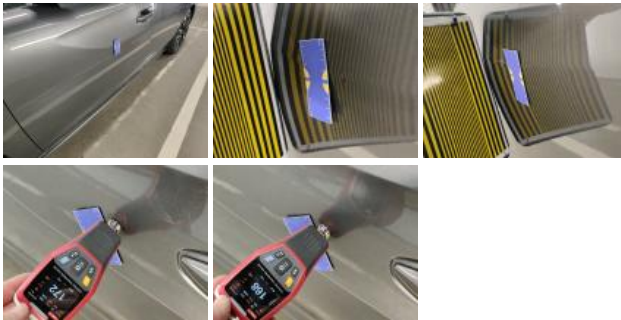
Instrument panel, complete, Repaired, Acceptable



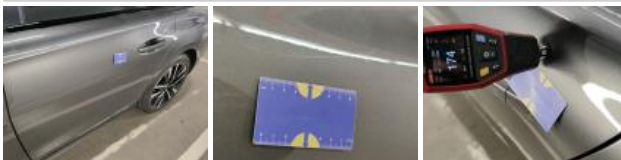
Bonnet, Repaired, Acceptable



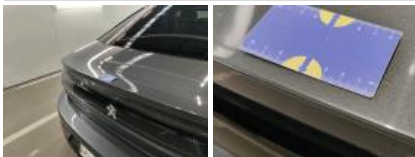
Door FL, Dent(s), Acceptable



Door RL, Scratch(es), Polish



Tailgate / Boot, Scratch(es), Acceptable



Alloy rim RR polished, Scratch(es), Repair and paint (complete)



Wing RR, Dent(s), Acceptable



Door FR, Repaired, Acceptable



Wing FR, Repaired, Acceptable



Bodywork, No damage, Acceptable

